

## Sales Diary January to June 2009

### ANTIQUA SALES - Sales commence at 10:30 am each day

Tues/Weds 13 <sup>th</sup> & 14 <sup>th</sup> January	with Clocks
Tues/Weds 10 <sup>th</sup> & 11 <sup>th</sup> February	with Collectors
Weds/Thurs 15 <sup>th</sup> & 16 <sup>th</sup> April	with Collectors
Tues/Weds 12 <sup>th</sup> & 13 <sup>th</sup> May	with Clocks
Tues/Weds 16 <sup>th</sup> & 17 <sup>th</sup> June	with Collectors



#### VIEWING:

Saturday previous 9am—12 noon  
 Day previous to first day sale 9am—7.30pm  
 Day previous to second day sale 8.30am—4.00pm  
 Morning of second day sale from 8.30am

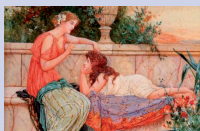
### SELECTED QUALITY ANTIQUES AND PICTURES

Sales Commence at 10:30am

Tues 10 <sup>th</sup> March	with Beswick & Doulton
Weds 11 <sup>th</sup> March	with Clocks & Watches
Thurs 12 <sup>th</sup> March	Selected Pictures

#### VIEWING:

Saturday previous 9am—12 noon  
 Monday 9am—7.30pm  
 Tuesday 8.30am—7.30pm  
 Wednesday 8.30am—7.30pm  
 Thursday from 8.30am



### PICTURE SALES - Sales Commence at 10am

Friday 6<sup>th</sup> February  
 Friday 3<sup>rd</sup> April  
 Friday 12<sup>th</sup> June

#### VIEWING:

Wednesday previous 9am—6pm  
 Thursday previous 9am—7.30pm  
 Morning of Sale from 8.30am



### PRINT SALES - Sales Commence at 10:30am

Friday 9<sup>th</sup> January  
 Friday 8<sup>th</sup> May

#### VIEWING:

Thursday previous 9am—7.30pm  
 Morning of Sale from 8.30am



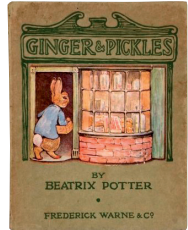
## Sales Diary January to June 2009

**BOOK SALES** - Sales Commence Day 1 at 10am and Day 2 at 11am

Thursday 29<sup>th</sup> January  
 Thurs/Fri 26<sup>th</sup> & 27<sup>th</sup> February  
 Thurs/Fri 30<sup>th</sup> April & 1<sup>st</sup> May  
 Thursday 28<sup>th</sup> May  
 Thurs/Fri 25<sup>th</sup> & 26<sup>th</sup> June

**VIEWING:**

Wednesday previous 9am—7.30pm  
 Thursday 8.30am—4pm  
 Morning of Sale from 8.30am



**SPECIAL SALE** - Sale Commences at 11am  
 Vintage Toys, Gramophones & Associated Items

Thursday 19<sup>th</sup> March

**VIEWING:**

Wednesday previous 9am—7.30pm  
 Morning of Sale from 8.30am



**WINE SALE** - Sale Commences at 10am

Thursday 7<sup>th</sup> May

**VIEWING:**

Wednesday previous 2pm—7.30pm  
 Morning of Sale from 8.30am



**KEYS FAMOUS WEEKLY COUNTRY SALE**  
 Every Monday (Tuesdays after a Bank Holiday)

10am	Garden Produce & Nursery Stock
10.30am	Deadstock
10.30am	Victorian & 20 <sup>th</sup> Century Furniture and Effects
12 noon	Bicycles
12.30pm	Aylsham Motor Vehicle Sale
1.30pm	Cottage Furniture & Effects with Books



**VIEWING:**

Saturday 9am - 12 noon  
 Morning of Sale from 8.30am

Opening Times for collection and delivery of goods  
 Tuesday to Friday 9am – 1pm and 2pm – 4.30pm  
 Saturday 9am – 12 noon