

Sales Diary July to December 2009

ANTIQUQUE SALES

Sales commence at 10:30am each day

Tues/Weds 21 st & 22 nd July	with Clocks
Tues/Weds 18 th & 19 th August	with Collectors
Tues/Weds 15 th & 16 th September	with Clocks
Tues/Weds 13 th & 14 th October	with Collectors
Tues/Weds/Thurs 17 th , 18 th & 19 th November	with Beswick & Doulton, Clocks & Watches & Wine



VIEWING:

Saturday previous 9am—12 noon
Monday previous 9am—7.30pm
Tuesday 8.30am—4.00pm
Wednesday from 8.30am

BOOK SALES

Two Day Sales Commence Day 1 at 10am and Day 2 at 11am
One Day Sale Commences at 11am

Thursday 30th July
Thursday/Friday 27th & 28th August
Thursday 24th September
Thursday/Friday 29th & 30th October
Thursday 26th November



VIEWING:

Wednesday previous 9am—7.30pm
Thursday 8.30am—4pm
Morning of Sale from 8.30am

KEYS FAMOUS WEEKLY COUNTRY SALE

Every Monday
(Tuesdays after a Bank Holiday)

10am	Garden Produce & Nursery Stock
10.30am	Deadstock
10.30am	Victorian & 20th Century Furniture and Effects
12 noon	Bicycles
12.30pm	Aylsham Motor Vehicle Sale
1.30pm	Cottage Furniture & Effects with Books



VIEWING:

Saturday 9am—12 noon,
Morning of Sale from 8.30am

Sales Diary July to December 2009

SELECTED QUALITY PICTURES

Sales Commence at 10:30am

Friday 10th July

Friday 6th November

VIEWING:

Wednesday previous 9am—6pm

Thursday previous 9am—8.30pm

Morning of Sale from 8.30am



PICTURE SALES

Sales Commence at 10am

Friday 7th August

Friday 9th October

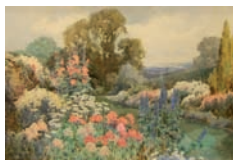
Friday 11th December

VIEWING:

Wednesday previous 9am—6pm

Thursday previous 9am—7.30pm

Morning of Sale from 8.30am



PRINT SALES

Sale Commences at 10:30am

Friday 11th September

VIEWING:

Thursday previous 9am—7.30pm

Morning of Sale from 8.30am



SPECIAL SALE

Sale Commences at 10.30am

Thursday 10th December

VIEWING:

Wednesday previous 9am—7.30pm

Morning of Sale from 8.30am

